

# Pinelands Management Area Boundary Assessment for Climate Risks

PINELANDS CLIMATE COMMITTEE

APRIL 19, 2023

# FY 2023 CLIMATE COMMITTEE PRIORITIES

- ▶ Amendments to CMP solar energy facility standards
- ▶ Analysis of Pinelands Management Area boundaries to identify areas within Regional Growth Areas, Pinelands Towns and Pinelands Villages that are vulnerable to climate change

# GIS-based analysis:

Risks, Uses, T&E

Flood  
Hazards

Wildfire  
Hazards

Threatened &  
Endangered  
Species

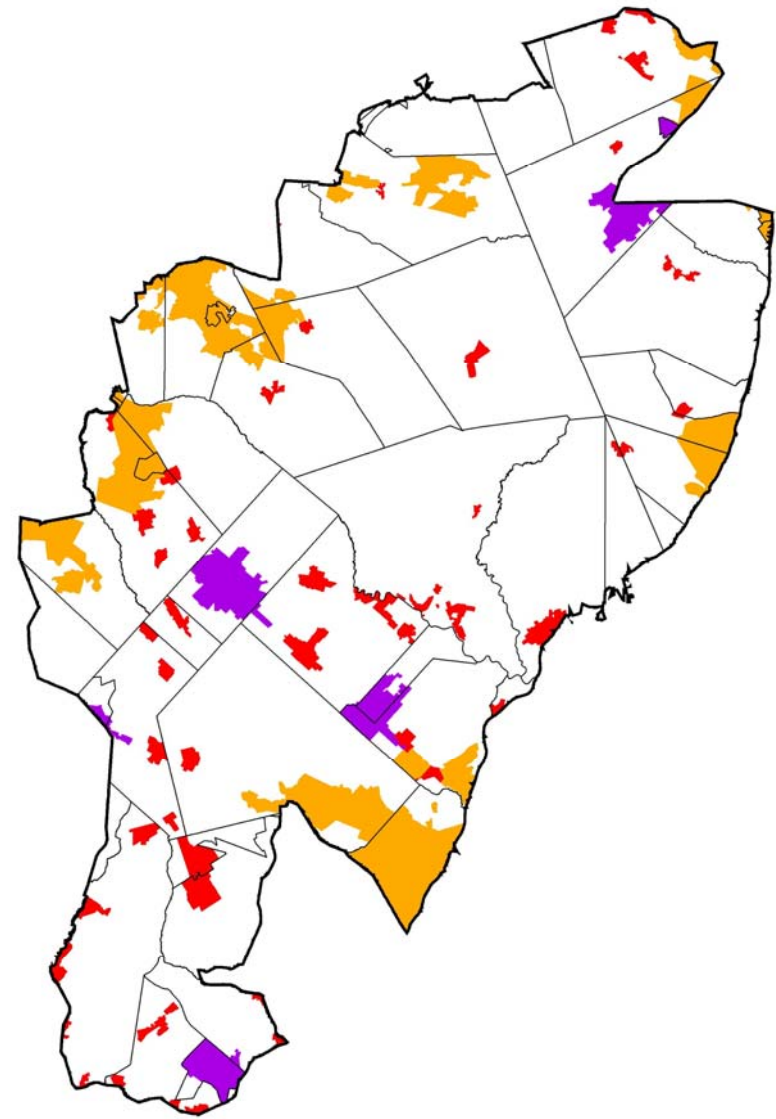
Preserved  
Land

Existing Land  
Use/Land  
Cover

Municipal  
Zoning

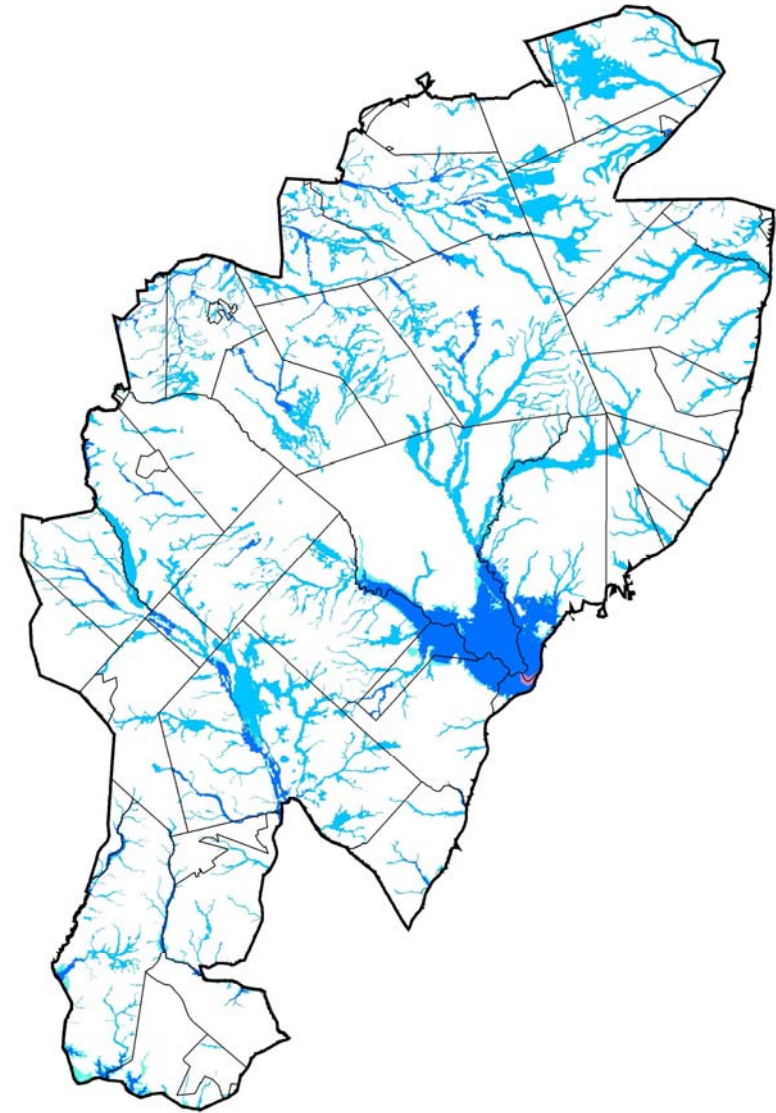
## Growth-Oriented Management Areas

- 24 municipalities with Regional Growth Areas (orange)
- 7 Pinelands Towns (purple)
- 47 Pinelands Villages (red)



# Flood Hazard Layers

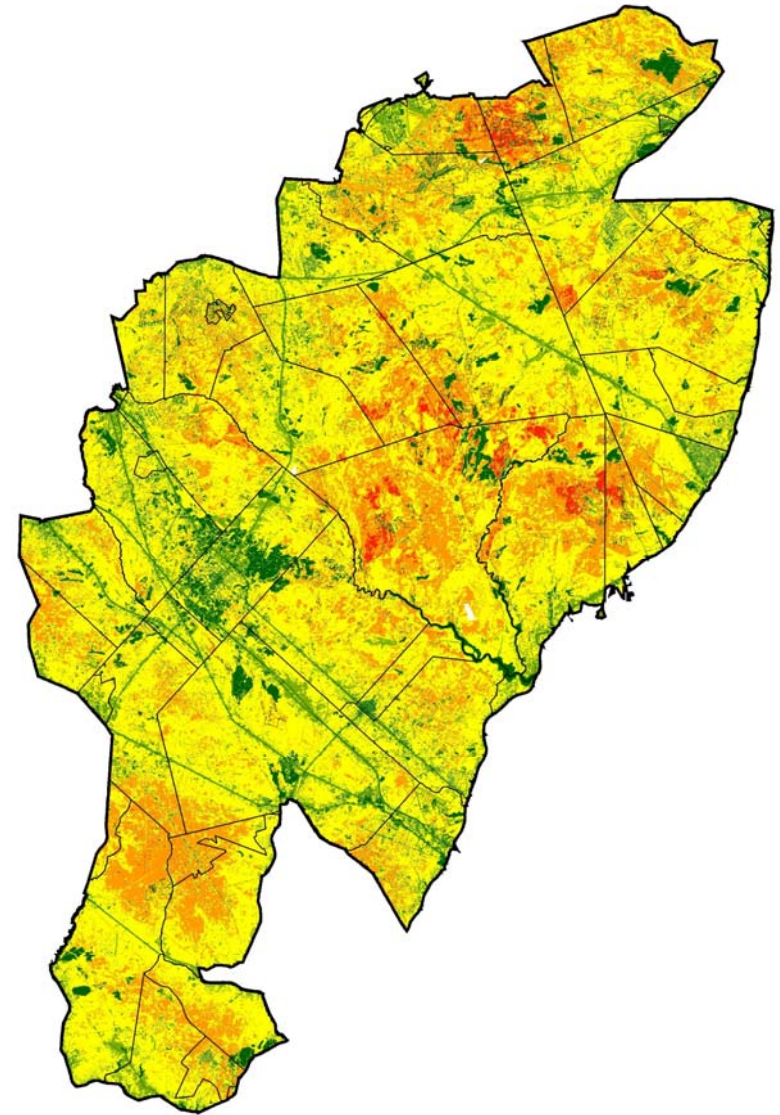
- Source: NJ Flood Mapper/Rutgers University
- Composite FIRM Data 2020 (shown)
  - Combination of effective and preliminary mapping data from 2020
  - Produced by FEMA for Flood Insurance Rate Maps (FIRMs)
  - National standard for quantifying current flood hazards
- Mean Higher High Water
  - Inundated coastal areas under future sea level rise scenarios
  - Inundation in hydrologically disconnected low-lying areas
  - The 5-foot SLR scenario mapping





# Wildfire hazard layer

- Source: NASA/NJPC
- Fire Risk Assessment Map
  - Determines wildfire risk based on several factors, including vegetative cover and remoteness/ease of access
  - Five categories of risk:
    - Extremely Low (dark green)
    - Low (light green)
    - Moderate (yellow)
    - High (orange)
    - Extremely High (red)
  - Evaluation focused on “High” and “Extremely High” areas



# Threatened & Endangered Species

- ▶ Sources: NJDEP, NJPC
  - ▶ NJDEP's Endangered and Nongame Species Program
  - ▶ Commission Staff Records
- ▶ Ranges
- ▶ Migration





# Additional factors -Use



## Preserved Land

PCF Acquisitions  
PDC Severances  
Farmland Preservation  
Open Space  
502 & 20 Target Areas for land protection



## Land Use/Land Cover Data

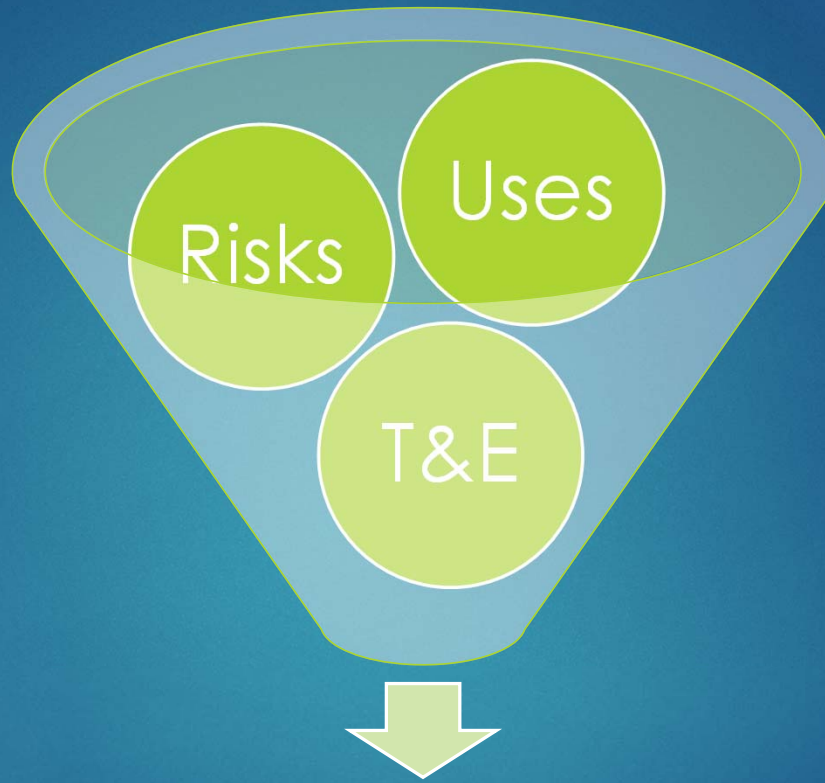
Vacant vs. Developed  
Wetland vs. Upland



## Zoning

Types of Development  
Redevelopment Areas  
Adjacent Management Areas





PMA Boundary Changes Recommended

# Potential Actions

- ▶ Amendments to the Pinelands Land Capability Map
  - ▶ Redesignation of management areas from growth-oriented to conservation-oriented
- ▶ Municipal rezonings or reductions in permitted development intensities
- ▶ New or amended CMP environmental standards
- ▶ Targeted land acquisition/preservation
  - ▶ Pinelands Conservation Fund
  - ▶ Green Acres
  - ▶ Non-Profits

# Next Steps



- ▶ Complete identification and analysis of areas potentially impacted – May 2023
- ▶ Climate Committee discussion of staff findings and recommendations – July 2023
- ▶ Permanent Land Protection Round priorities
- ▶ P&I Committee review of potential CMP amendments for PMA boundaries

questions & comments?

